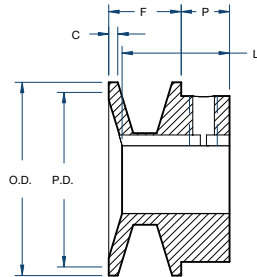


# Sheaves

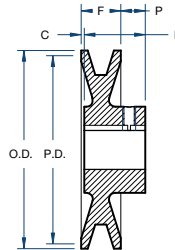
## AK STYLE



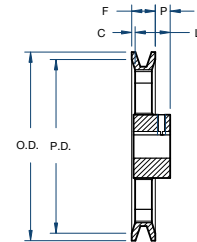
# BLACKSTAR®



Type 1



Type 2



Type 3

Part No.	Diameter (in)			Type	Stock Bores Marked (x) (in)											Dimensions (in)				Approx. Weight (lbs)
	Outside	Pitch 4L/A	Pitch 5L/B		1/2	5/8	3/4	7/8	15/16	1	1-1/8	1-3/16	1-1/4	1-3/8	1-7/16	F	L	P	C	
AK17	1.75	1.50	1.16	1	x	x	—	—	—	—	—	—	—	—	21/32	15/16	7/16	5/32	0.2	
AK20	2.00	1.80	1.46	1	x	x	x	—	—	—	—	—	—	—	21/32	15/16	7/16	5/32	0.3	
AK21	2.10	1.90	1.56	1	x	x	x	—	—	—	—	—	—	—	21/32	15/16	7/16	5/32	0.4	
AK22	2.20	2.00	1.66	1	x	x	x	—	—	—	—	—	—	—	21/32	15/16	7/16	5/32	0.5	
AK23	2.30	2.10	1.76	1	x	x	x	—	—	—	—	—	—	—	21/32	15/16	7/16	5/32	0.5	
AK25	2.50	2.30	1.96	2	x	x	x	—	—	—	—	—	—	—	21/32	15/16	7/16	5/32	0.5	
AK26	2.60	2.40	2.06	2	x	x	x	—	—	—	—	—	—	—	21/32	15/16	7/16	5/32	0.5	
AK27	2.70	2.50	2.16	2	x	x	x	—	—	—	—	—	—	—	21/32	15/16	7/16	5/32	0.6	
AK28	2.80	2.60	2.26	2	x	x	x	—	—	—	—	—	—	—	21/32	15/16	7/16	5/32	0.7	
AK30	3.05	2.80	2.46	2	x	x	x	x	—	—	—	—	—	—	21/32	15/16	7/16	5/32	0.7	
AK32	3.25	3.00	2.66	2	x	x	x	x	—	—	—	—	—	—	21/32	15/16	7/16	5/32	0.7	
AK34	3.45	3.20	2.86	2	x	x	x	x	—	—	—	—	—	—	21/32	15/16	7/16	5/32	0.9	
AK39	3.75	3.50	3.16	2	x	x	x	x	x	x	—	—	—	—	3/4	1-5/32	15/32	1/16	1.4	
AK41	3.95	3.70	3.36	2	x	x	x	x	x	x	—	—	—	—	3/4	1-5/32	15/32	1/16	1.5	
AK44	4.25	4.00	3.66	3	x	x	x	x	x	x	x	—	—	—	3/4	1-5/32	15/32	1/16	1.5	
AK46	4.45	4.20	3.86	3	x	x	x	x	x	x	x	—	—	—	3/4	1-5/32	15/32	1/16	1.5	
AK49	4.75	4.50	4.16	3	x	x	x	x	x	x	x	—	—	—	3/4	1-5/32	15/32	1/16	1.7	
AK51	4.95	4.70	4.36	3	x	x	x	x	—	x	x	—	—	—	3/4	1-5/32	15/32	1/16	1.7	
AK54	5.25	5.00	4.66	3	x	x	x	x	x	x	x	—	—	—	3/4	1-5/32	15/32	1/16	1.8	
AK56	5.45	5.20	4.86	3	x	x	x	x	x	x	x	—	—	—	3/4	1-5/32	15/32	1/16	1.9	
AK59	5.75	5.50	5.16	3	x	x	x	x	x	x	x	—	—	—	3/4	1-5/32	15/32	1/16	2.0	
AK61	5.95	5.70	5.36	3	x	x	x	x	x	x	x	—	—	—	3/4	1-5/32	15/32	1/16	2.1	
AK64	6.25	6.00	5.66	3	x	x	x	x	x	x	x	—	—	—	3/4	1-5/32	15/32	1/16	2.2	
AK66	6.45	6.20	5.86	3	—	x	x	—	—	x	x	—	—	—	3/4	1-5/32	15/32	1/16	2.3	
AK69	6.75	6.50	6.16	3	—	—	x	—	—	x	x	—	—	—	3/4	1-15/32	23/32	0	3.5	
AK71	6.95	6.70	6.36	3	—	x	x	—	—	x	x	—	—	x	3/4	1-15/32	23/32	0	3.8	
AK74	7.25	7.00	6.66	3	x	x	x	—	x	x	x	—	—	x	3/4	1-15/32	23/32*	0*	3.4	
AK79	7.75	7.50	7.16	3	—	—	x	—	—	x	x	—	—	x	3/4	1-15/32	23/32	0	4.0	
AK84	8.25	8.00	7.66	3	x	x	x	—	x	x	—	—	—	x	3/4	1-15/32	23/32*	0*	3.8	
AK89	8.75	8.50	8.16	3	—	—	x	—	—	x	x	—	—	x	3/4	1-15/32	23/32	0	4.3	
AK94	9.25	9.00	8.66	3	x	x	x	—	x	x	—	—	—	x	3/4	1-15/32	23/32*	0*	4.5	
AK99	9.75	9.50	9.16	3	—	—	x	—	—	x	—	—	—	x	3/4	1-15/32	23/32	0	5.3	
AK104	10.25	10.00	9.66	3	—	x	x	—	—	x	—	—	—	x	3/4	1-15/32	23/32*	0*	5.1	
AK109	10.75	10.50	10.16	3	—	—	x	—	—	x	—	—	—	x	3/4	1-15/32	23/32	0	5.8	
AK114	11.25	11.00	10.66	3	—	—	x	—	—	x	—	—	—	x	3/4	1-15/32	23/32*	0*	5.6	
AK124	12.25	12.00	11.66	3	—	x	x	—	—	x	—	—	—	x	3/4	1-15/32	23/32*	0*	6.5	
AK134	13.25	13.00	12.66	3	—	—	x	—	—	x	—	—	—	x	3/4	1-15/32	23/32	0	7.5	
AK144	14.25	14.00	13.66	3	—	—	x	—	—	x	—	—	—	x	3/4	1-15/32	23/32	0	8.5	
AK154	15.25	15.00	14.66	3	—	—	x	—	—	x	—	—	—	x	3/4	1-15/32	23/32	0	9.8	
AK184	18.25	18.00	17.66	3	—	—	x	—	—	x	—	—	—	x	3/4	1-15/32	23/32	0	12.1	

\*P= 25/32" and C= 1/16" for 1" bore and smaller.